
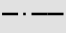
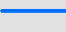
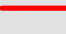
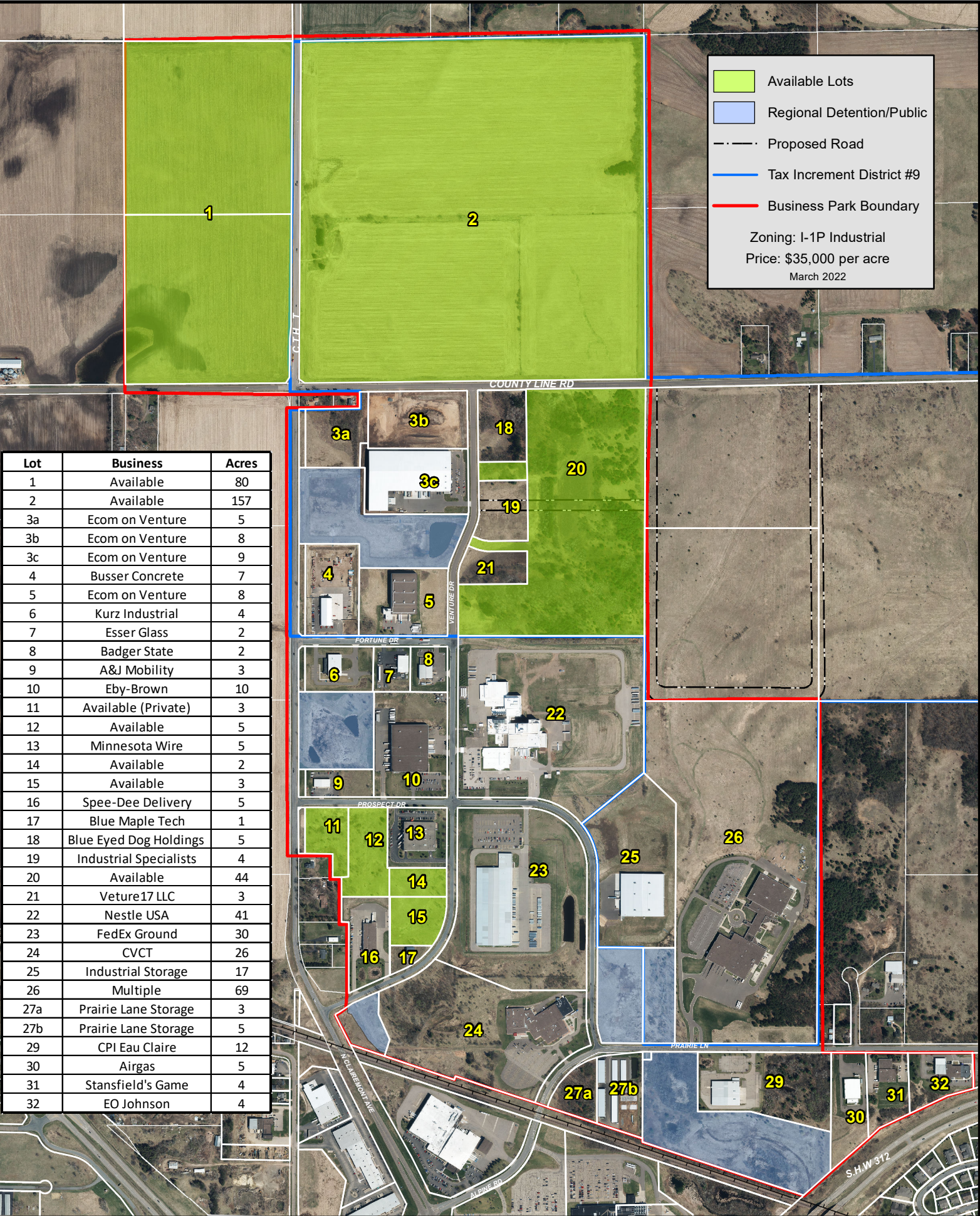
 Available Lots
 Regional Detention/Public
 Proposed Road
 Tax Increment District #9
 Business Park Boundary

Zoning: I-1P Industrial
 Price: \$35,000 per acre
 March 2022

| Lot | Business | Acres |
|-----|------------------------|-------|
| 1 | Available | 80 |
| 2 | Available | 157 |
| 3a | Ecom on Venture | 5 |
| 3b | Ecom on Venture | 8 |
| 3c | Ecom on Venture | 9 |
| 4 | Busser Concrete | 7 |
| 5 | Ecom on Venture | 8 |
| 6 | Kurz Industrial | 4 |
| 7 | Esser Glass | 2 |
| 8 | Badger State | 2 |
| 9 | A&J Mobility | 3 |
| 10 | Eby-Brown | 10 |
| 11 | Available (Private) | 3 |
| 12 | Available | 5 |
| 13 | Minnesota Wire | 5 |
| 14 | Available | 2 |
| 15 | Available | 3 |
| 16 | Spee-Dee Delivery | 5 |
| 17 | Blue Maple Tech | 1 |
| 18 | Blue Eyed Dog Holdings | 5 |
| 19 | Industrial Specialists | 4 |
| 20 | Available | 44 |
| 21 | Veture17 LLC | 3 |
| 22 | Nestle USA | 41 |
| 23 | FedEx Ground | 30 |
| 24 | CVCT | 26 |
| 25 | Industrial Storage | 17 |
| 26 | Multiple | 69 |
| 27a | Prairie Lane Storage | 3 |
| 27b | Prairie Lane Storage | 5 |
| 29 | CPI Eau Claire | 12 |
| 30 | Airgas | 5 |
| 31 | Stansfield's Game | 4 |
| 32 | EO Johnson | 4 |



Gateway Northwest Business Park Eau Claire, Wisconsin

